



DESCRIPTION

Campden Hill Gate is perhaps Kensington's most highly prized mansion building. Dating back to the 1930's, it is set within its own grounds with a private road providing plenty of off-street parking for its residents, has a beautiful communal garden and a porter service. This third floor lateral three bedroom (all ensuite) apartment has high ceilings & easterly and southerly aspects, ensuring beautiful natural light and some wonderful views over treetops, and right across London. Measuring approximately 1,854 sq ft, the further accommodation includes a reception room, dining room, kitchen, en suite bathroom, shower room, cloakroom and wide entrance hall.

LOCATION

The block benefits from a porter, communal garden and private parking and is located next to one of the eastern entrances to Holland Park at the top of the Phillimore Estate. Campden Hill Gate is conveniently located for the extensive shopping and transport facilities of High Street Kensington (Circle and District lines) and Notting Hill Gate (Circle, District and Central lines) and is situated next to the open spaces of Holland Park.

PRICE

£4,100,000 (£2,211/sqft)

FEATURES

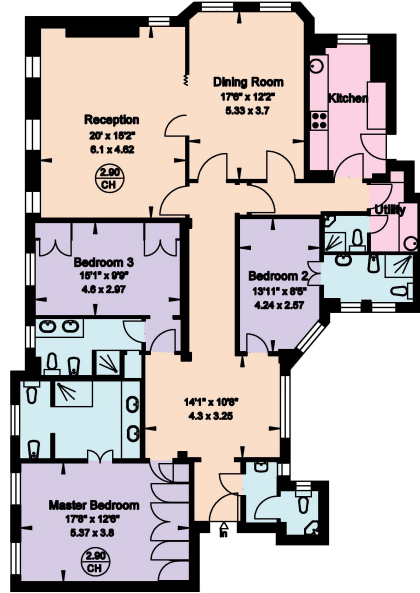
- ✓ 3 En-suite Bedrooms
- ✓ 2 Receptions
- ✓ 3rd Floor
- ✓ 1,854 sqft
- ✓ Panoramic Views of London
- ✓ High Ceilings
- ✓ 1930'S Art-deco mansion building

TERMS

Tenure: Long leasehold

Stamp Duty : £405,750

Campden Hill Gate
London W8
Gross Internal Area = 172 sq. metres
1854 sq. feet



Third Floor