



DESCRIPTION

A truly elegant, spacious and very well decorated garden flat arranged over the ground and lower ground floors of a substantial grade II listed white stucco fronted building. This flat boasts a fabulous double reception/dining room with traditional high ceilings & wooden floors. The property further offers two double bedroom suites as well as benefiting from a stylish eat in kitchen which opens onto a private balcony overlooking the patio garden.

LOCATION

Located towards the favoured western end of Eaton Place is a broad residential street in the heart of Belgravia within easy walking distance of the world famous shops in Sloane Street and Knightsbridge, including Harvey Nichols. Sloane Square, with its excellent restaurants and underground station, is also close by.

PRICE

£3,995,000 (£2,093/sqft)

FEATURES

- ✓ 2 Bedroom suites
- ✓ Double Reception/dining room
- ✓ High ceilings
- ✓ Kitchen\ breakfast room
- ✓ 1,908 sq ft
- ✓ Private Terrace
- ✓ Patio Garden

TERMS

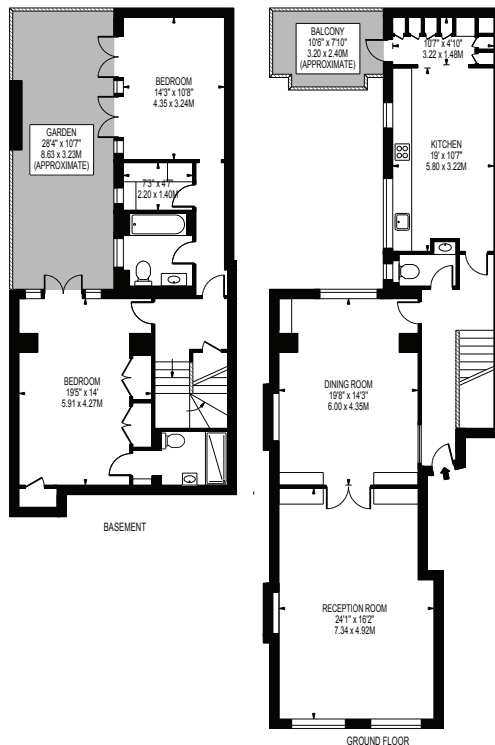
Tenure: Leasehold 104 years approximately

Service Charge: £10,032 per annum

Ground Rent: £250 per annum



EATON PLACE
 APPROXIMATE GROSS INTERNAL FLOOR AREA: 1822 SQ FT - 169.31 SQ M



FOR ILLUSTRATION PURPOSES ONLY

THIS FLOOR PLAN SHOULD BE USED AS A GENERAL OUTLINE FOR GUIDANCE ONLY AND DOES NOT CONSTITUTE IN WHOLE OR IN PART AN OFFER OR CONTRACT. ANY INTENDING PURCHASER OR LESSEE SHOULD SATISFY THEMSELVES BY INSPECTION, SEARCHES, ENQUIRIES AND FULL SURVEY AS TO THE CORRECTNESS OF EACH STATEMENT. ANY AREAL MEASUREMENTS OR DISTANCES QUOTED ARE APPROXIMATE AND SHOULD NOT BE USED TO VALUE A PROPERTY OR BE THE BASIS OF ANY SALE OR LET.